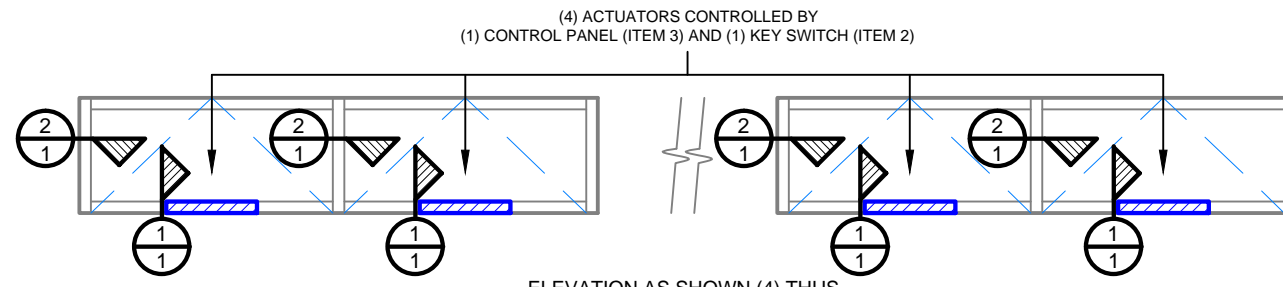


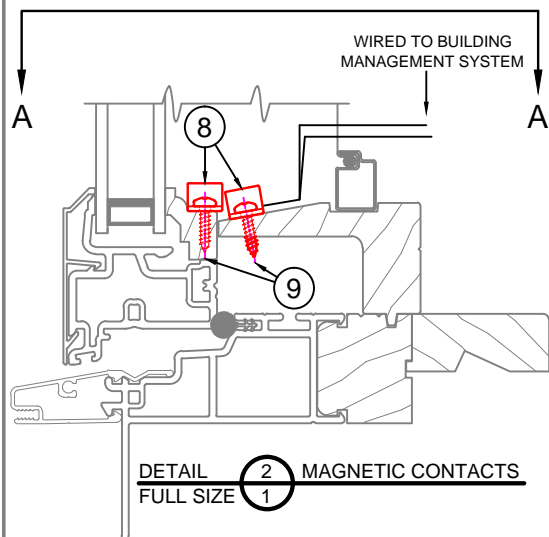
**PUSH POINT DETAIL**  
SCALE : 1 1/2"=1'-0"



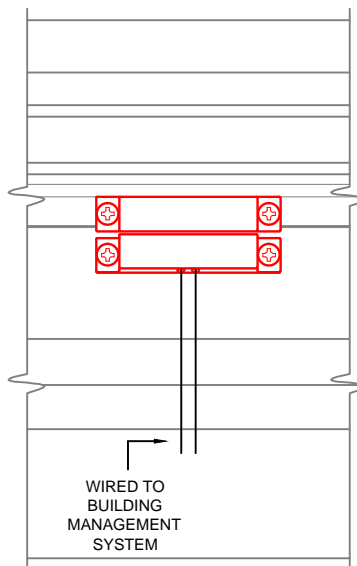
(4) ACTUATORS CONTROLLED BY  
(1) CONTROL PANEL (ITEM 3) AND (1) KEY SWITCH (ITEM 2)  
ELEVATION AS SHOWN (4) THUS  
SCALE : 3/4"=1'-0"

**ELECTRICAL NOTES:**

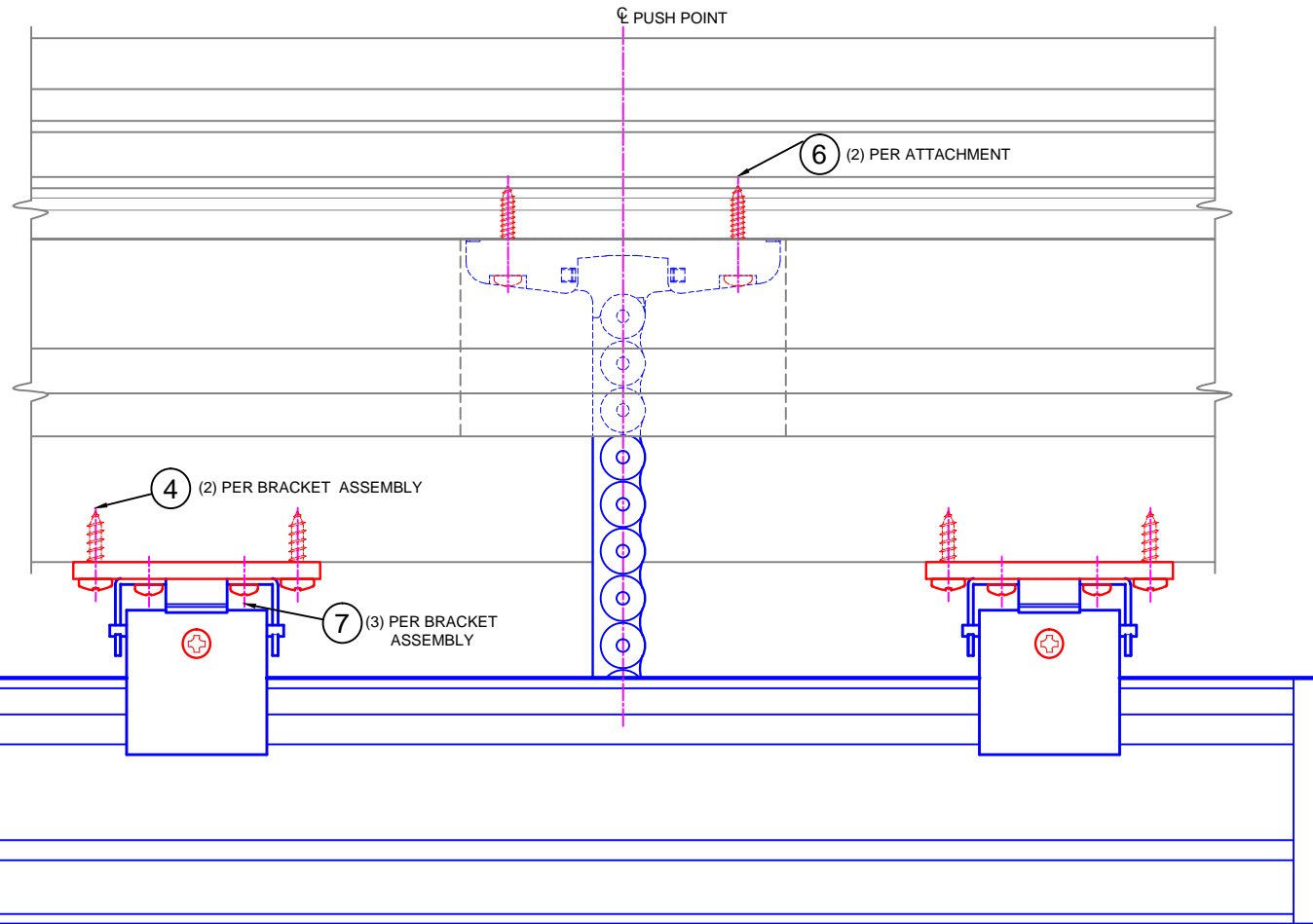
1. OUR MOTORIZED SYSTEM INCLUDES: THE ACTUATOR, 3-POSITION SWITCH, CONTROL PANEL AND CLEARLINE ATTACHMENT AT THE WINDOW. IT DOES NOT INCLUDE: ANY INSTALLATION, FIELD WIRING, SWITCH BOXES, ELECTRICAL CONDUITS, OR JUNCTION BOXES NECESSARY TO COMPLY WITH ELECTRICAL CODES FOR 120V AND LOW VOLTAGE WIRING REQUIREMENTS. NOTE: PROVISIONS FOR PROPER FIELD WIRING MUST BE COORDINATED WITH ELECTRICAL CONTRACTOR.
2. THIS MOTORIZED SYSTEM AS SUPPLIED CAN BE CONTROLLED BY THERMOSTAT OR AUTOMATIC MODE.
3. KEY SWITCH (ITEM 2) AND CONTROL PANEL (ITEM 3) CAN BE PLACED AT ANY LOCATION WITHIN 100 FT.
4. REFER TO WIRING DIAGRAM ED-840 : (4) ACTUATORS CONTROLLED BY (1) CONTROL PANEL (ITEM 3) FROM (1) KEY SWITCH (ITEM 2) AND/OR RAIN SENSORS.
5. 5 DEGREE DIFFERENTIAL REQUIRED FOR THERMOSTAT CONTROL.
6. WINDOWS MUST BE FULLY OPEN BEFORE EXHAUST FANS START.
7. REQUIRES A TIMED MOMENTARY COMMAND FROM THE BUILDING MANAGEMENT SYSTEM.



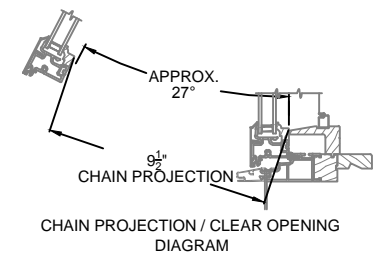
DETAIL 2 MAGNETIC CONTACTS  
FULL SIZE 1



SECTION A-A  
FULL SIZE



DETAIL 1-1 ITEM 1  
FULL SIZE 1



**GENERAL NOTES :**

1. THESE CONTROLS WILL OPEN VENT 9/16".
2. \* DENOTES ITEMS SUPPLIED WITH ACTUATOR.
3. ALL ELEVATIONS ARE VIEWED FROM THE INSIDE.
4. VENTS MUST MOVE FREELY - FINGER-TIP OPERATION. FOR EASE OF OPERATION, HINGES SHOULD BE ZERO FRICTION & SUPPLIED WITH LOOSE "RIVETS".
5. WARNING : KEEP HANDS/CHILDREN AWAY WHILE OPERATING WINDOWS.

COLOR = SILVER

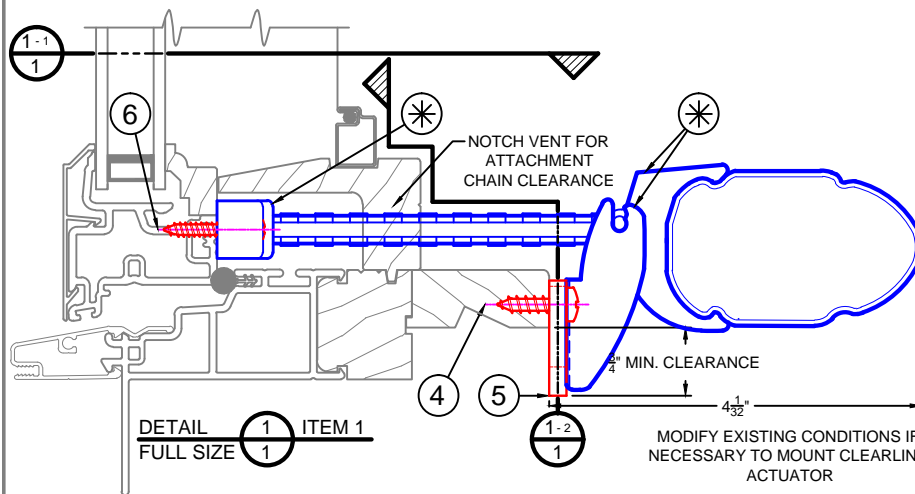
ITEM	PART NO.	DESCRIPTION	QTY.
12	2185	PEN SCREWDRIVER	
11	2130	SET-UP SWITCH	
10	2089	ATTACHMENT RELEASE TOOL	
9	#6	SELF TAPPING SCREW X 1/2	
8	2179	MAGNETIC CONTACTS	
7	8-32	PAN HEAD MACHINE SCREW X 1/4	
6	#8	SELF TAPPING SCREW X 1	
5	2108	EXTENSION PLATE	
4	#10	SELF TAPPING SCREW X 3/4	
3	2220-1.14	CONTROL PANEL	
2	1754	KEY SWITCH	
1	2081	SLEEKLINE ACTUATOR	

PROJECT:  
**SAMPLE SLEEKLINE 1 PUSH POINT**

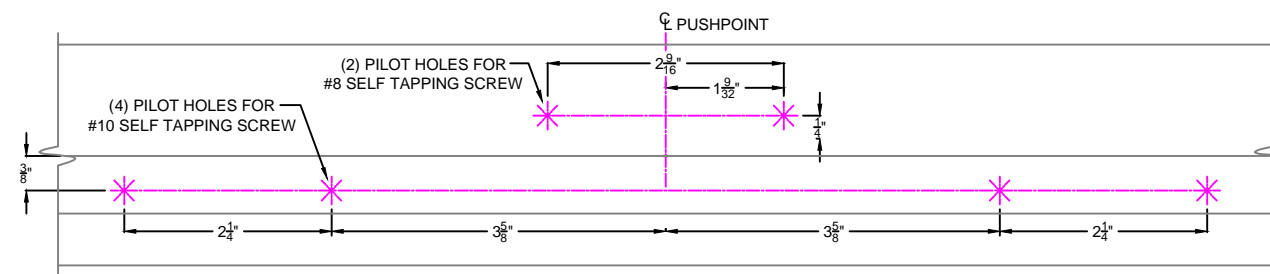
CUSTOMER				
ORDER NO.				
ARCHITECT				
WINDOW MFR.	WEATHER SHIELD SS 8205			
DWN BY:	DATE:	CHK BY:	DATE:	REVISED:

**CLEARLINE INCORPORATED**  
WINDOW CONTROL SYSTEMS  
P.O. BOX 1368  
NORTH WALES, PENNSYLVANIA 19454

SCALE	CLEARLINE JOB NO.	SHEET NO.
AS NOTED		1 OF 1



DETAIL 1 ITEM 1  
FULL SIZE 1



DETAIL 1-2 VENT PREPARATION  
FULL SIZE 1 NOT BY CLEARLINE, INC.