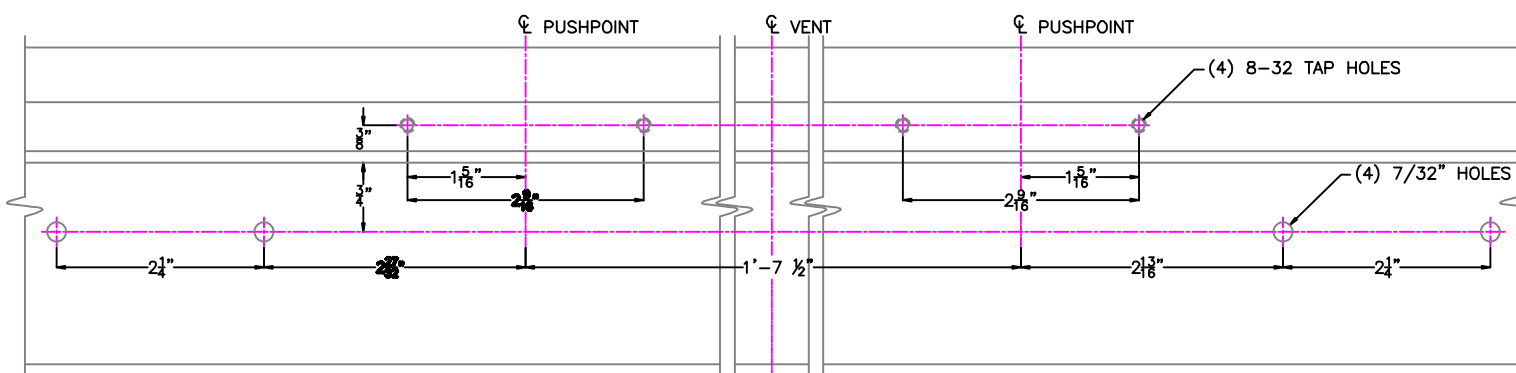
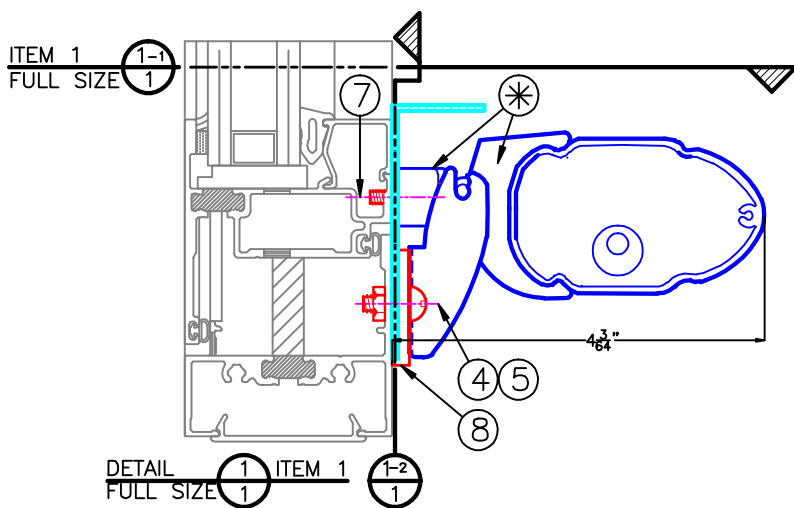
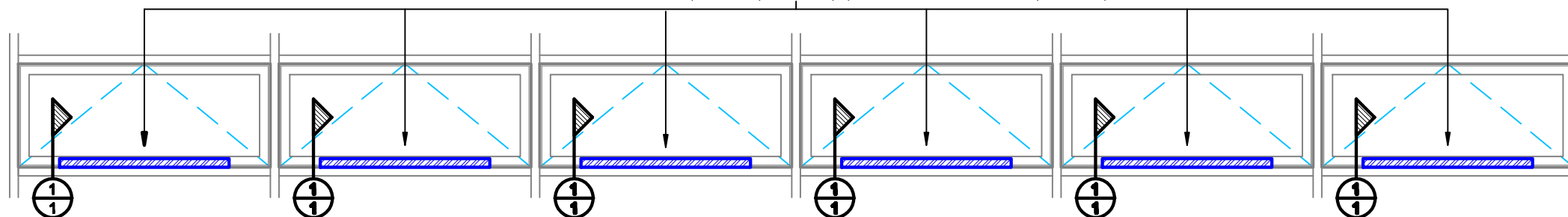


DETAIL 1-1 PLAN VIEW
FULL SIZE 1



DETAIL 1-2 VENT PREPARATION
FULL SIZE 1 (NOT BY CLEARLINE, INC.)

(6) ACTUATORS CONTROLLED BY POWER SUPPLY (ITEM 3), ACTUATOR GROUP CONTROLLER (ITEM 9) AND (1) ROCKER SWITCH (ITEM 2)



ELEVATION AS SHOWN (1) THUS
SCALE : 3/4"=1'-0"

ELECTRICAL NOTES:

1. OUR MOTORIZED SYSTEM INCLUDES: THE ACTUATOR, 3-POSITION SWITCH, ACTUATOR GROUP CONTROLLER AND CLEARLINE ATTACHMENT AT THE WINDOW. IT DOES NOT INCLUDE: ANY INSTALLATION, FIELD WIRING, SWITCH BOXES, ELECTRICAL CONDUITS, OR JUNCTION BOXES NECESSARY TO COMPLY WITH ELECTRICAL CODES FOR 120V AND LOW VOLTAGE WIRING REQUIREMENTS. NOTE: PROVISIONS FOR PROPER FIELD WIRING MUST BE COORDINATED WITH ELECTRICAL CONTRACTOR.
2. THIS MOTORIZED SYSTEM AS SUPPLIED CANNOT BE CONTROLLED BY THERMOSTAT OR AUTOMATIC MODE (NOT BY CLEARLINE, INC.)
3. KEY SWITCH (ITEM 2), ACTUATOR GROUP CONTROLLER (ITEM 9) AND POWER SUPPLY (ITEM 3) CAN BE PLACED AT ANY LOCATION WITHIN 100 FT.
4. REFER TO WIRING DIAGRAM ED-362: (6) ACTUATORS ARE CONTROLLED BY A POWER SUPPLY (ITEM 3) AND ACTUATOR GROUP CONTROLLER (ITEM 9) FROM (1) ROCKER SWITCH.

GENERAL NOTES

1. * DENOTES ITEMS SUPPLIED WITH ACTUATOR
2. THESE CONTROLS WILL OPEN VENT 14".
3. PARTS HAVE STANDARD SILVER FINISH.
4. ALL ELEVATIONS ARE VIEWED FROM THE INSIDE.
5. VENTS MUST MOVE FREELY - FINGER-TIP OPERATION. FOR EASE OF OPERATION, HINGES SHOULD BE SUPPLIED WITH "LOOSE RIVETS"
6. WARNING: KEEP HANDS/CHILDREN AWAY WHILE OPERATING WINDOWS.

ITEM	PART NO.	DESCRIPTION	QTY.
12	2089	ATTACHMENT RELEASE TOOL	1
11	#10	SELF TAPPING SCREW X 3/8	18
10	2122	SCREEN CLOSURE	6
9	2070A-3	ACTUATOR GROUP CONTROLLER	1
8	2108B	EXTENSION PLATE	12
7	8-32	PAN HEAD MACHINE SCREW X 5/8	26
6	8-32	PANHEAD MACHINE SCREW X 1/4	38
5	10-24	NUT	26
4	10-24	PANHEAD MACHINE SCREW X 1/2	26
3	2112	POWER SUPPLY (15A)	1
2	1631	ROCKER SWITCH	1
1	2082	SLEEKLINE ACTUATOR	6

PROJECT: SAMPLE SLEEKLINE

CUSTOMER:

ORDER NO.:

ARCHITECT:

WINDOW MFR.: YKK - YOW 225TU

DATE:

REVISION:

CLEARLINE INCORPORATED
WINDOW CONTROL SYSTEMS
P.O. BOX 1388
NORTH WALES, PENNSYLVANIA 19454

DATE: _____ **SCALE:** _____ **SHEET NO.:** _____

AS NOTED _____ **1 OF 1**