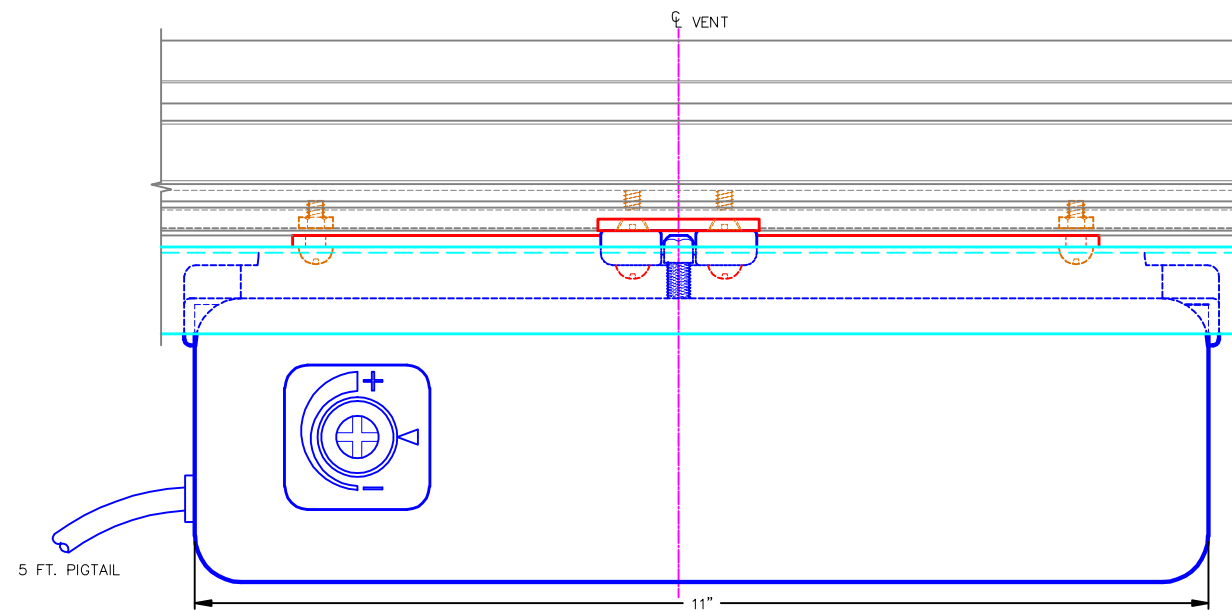
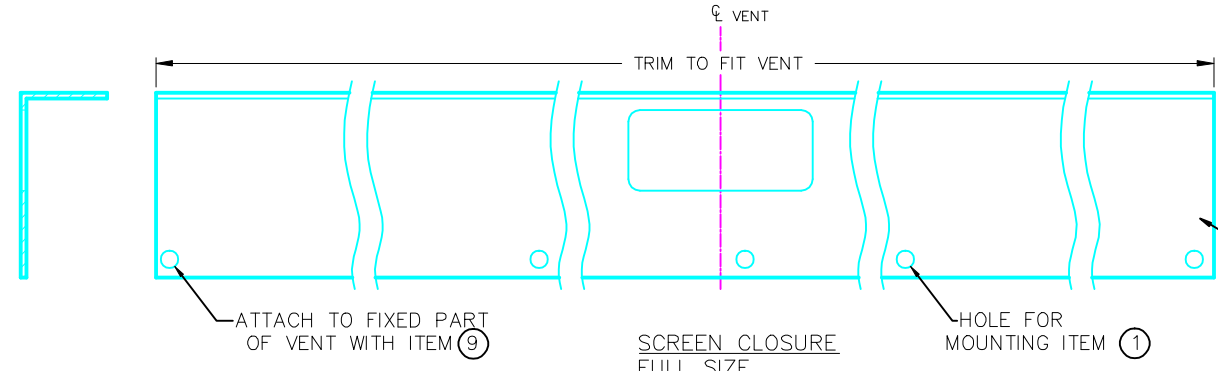
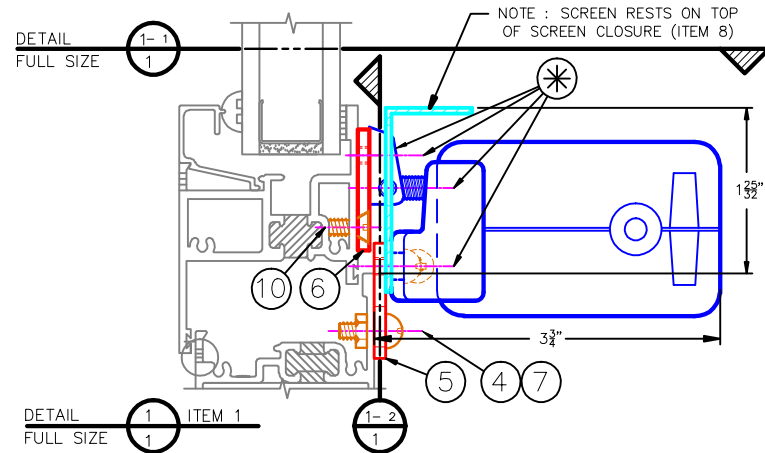


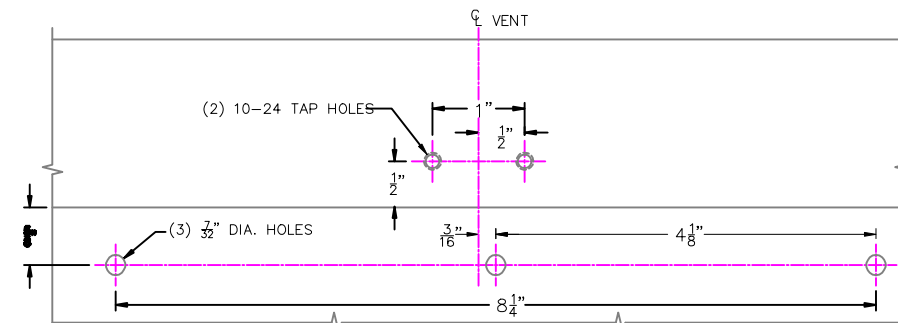
PUSH POINT DETAIL  
SCALE : 1 1/2"=1'-0"



DETAIL 1-1 PLAN VIEW  
FULL SIZE



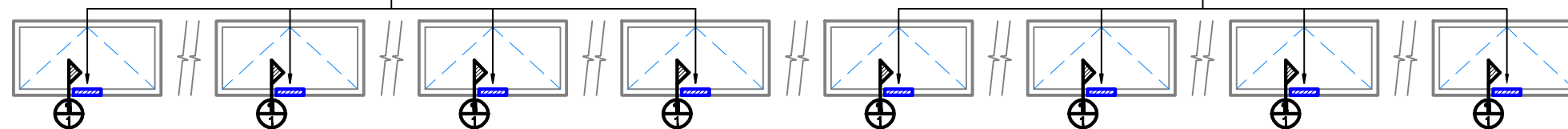
DETAIL 1-1 ITEM 1  
FULL SIZE



DETAIL 1-2 VENT PREPARATION  
FULL SIZE (NOT BY CLEARLINE, INC.)

(4) POWER RANGE ACTUATORS CONTROLLED BY  
(1) ROCKER SWITCH (ITEM 2),  
(1) POWER SUPPLY (ITEM 3)  
AND (1) ACTUATOR GROUP CONTROLLER (ITEM 11)

(4) POWER RANGE ACTUATORS CONTROLLED BY  
(1) ROCKER SWITCH (ITEM 2),  
(1) POWER SUPPLY (ITEM 3)  
AND (1) ACTUATOR GROUP CONTROLLER (ITEM 11)



NORTH ELEVATION (1) THUS  
SCALE : 1/2"=1'-0"

**ELECTRICAL NOTES:**

1. OUR MOTORIZED SYSTEM INCLUDES: THE ACTUATOR, 3-POSITION SWITCH AND CLEARLINE ATTACHMENT AT THE WINDOW. IT DOES NOT INCLUDE: ANY INSTALLATION, FIELD WIRING, SWITCH BOXES, ELECTRICAL CONDUITS, OR JUNCTION BOXES NECESSARY TO COMPLY WITH ELECTRICAL CODES FOR 120V AND LOW VOLTAGE WIRING REQUIREMENTS. NOTE: PROVISIONS FOR PROPER FIELD WIRING MUST BE COORDINATED WITH ELECTRICAL CONTRACTOR.
2. THIS MOTORIZED SYSTEM AS SUPPLIED CANNOT BE CONTROLLED BY THERMOSTAT OR AUTOMATIC MODE.
3. ROCKER SWITCH (ITEM 2) AND POWER SUPPLY (ITEM 3) CAN BE PLACED AT ANY LOCATION WITHIN 100 FT. SWITCH AND OTHER COMPONENT LOCATIONS TO BE DETERMINED BY OTHERS.
4. REFER TO WIRING DIAGRAM ED 412.; (4) ACTUATORS CONTROLLED FROM (1) ROCKER SWITCH (ITEM 2), (1) POWER SUPPLY (ITEM 3) AND (1) ACTUATOR GROUP CONTROLLER (ITEM 11).

**GENERAL NOTES**

1. (Symbol) DENOTES ITEMS SUPPLIED WITH ACTUATOR
2. THESE CONTROLS WILL OPEN VENT 12".
3. PARTS HAVE STANDARD SILVER FINISH.
4. ALL ELEVATIONS ARE VIEWED FROM THE INSIDE.
5. VENTS MUST MOVE FREELY - FINGER-TIP OPERATION. FOR EASE OF OPERATION, HINGES SHOULD BE SUPPLIED WITH "LOOSE RIVETS".
6. WARNING: KEEP HANDS/CHILDREN AWAY WHILE OPERATING WINDOWS.

11	2070A-2	ACTUATOR GROUP CONTROLLER	2
10	10-24	FLAT HEAD MACHINE SCREW X 3/8	18
9	#10	SELF TAPPING SCREW X 3/8	16
8	2016-48S	SCREEN CLOSURE	8
7	10-24	NUT	26
6	2038	ATTACHMENT EXTENSION PLATE	8
5	2001S	EXTENSION PLATE	8
4	10-24	PAN HEAD MACHINE SCREW X 1/2	26
3	2112	POWER SUPPLY (15A)	2
2	1631	ROCKER SWITCH	2
1	1992S	POWER RANGE ACTUATOR	8

ITEM	PART NO.	DESCRIPTION	QTY.
------	----------	-------------	------

**PROJECT:**  
**SAMPLE POWER RANGE**

<b>CUSTOMER</b>	
<b>ORDER NO.</b>	
<b>ARCHITECT</b>	
<b>WINDOW MFR.</b>	MERCER WINDOWS
<b>DRAWN BY:</b>	
<b>DATE:</b>	
<b>DESIGNED BY:</b>	
<b>DATE:</b>	
<b>REVIEWED BY:</b>	

**CLEARLINE INCORPORATED**  
**WINDOW CONTROL SYSTEMS**  
P.O. BOX 1308  
NORTH WALES, PENNSYLVANIA 19454

<b>SCALE</b>	CLEARLINE STD.	<b>DATE</b>
<b>AS NOTED</b>		<b>1 OF 1</b>