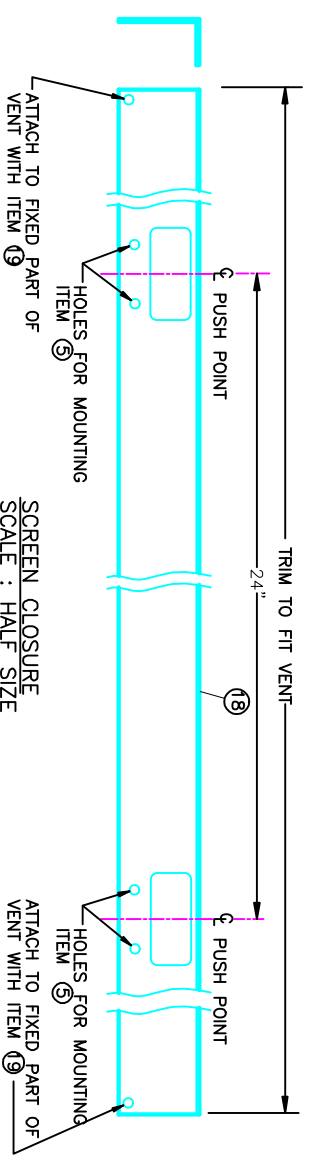
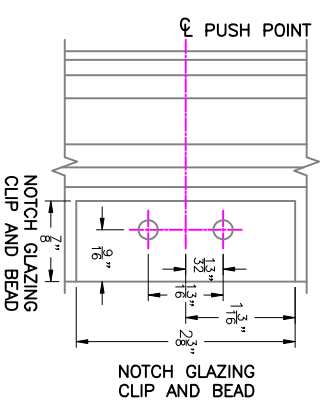


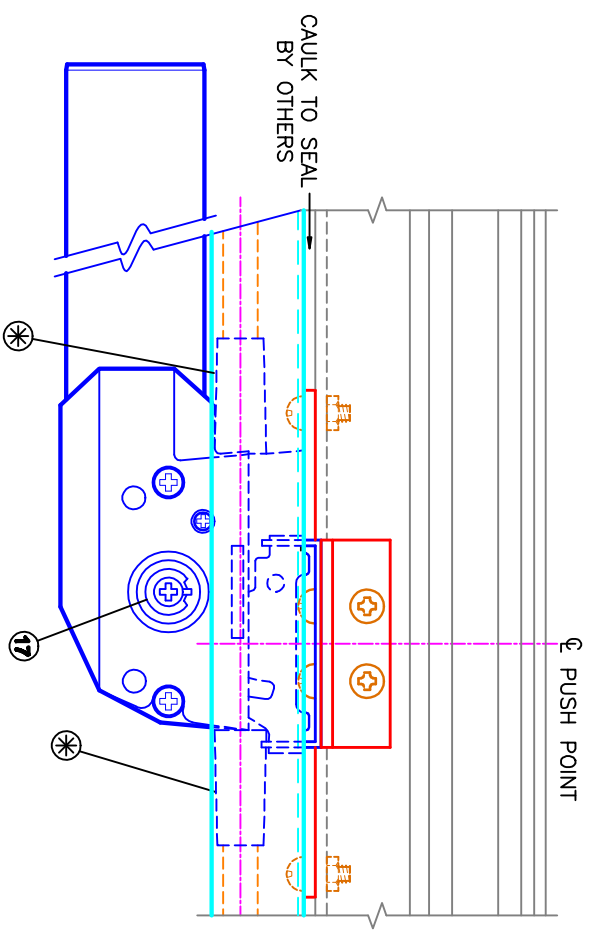
PUSH POINT DETAILS
SCALE : 1-1/2" = 1'-0"



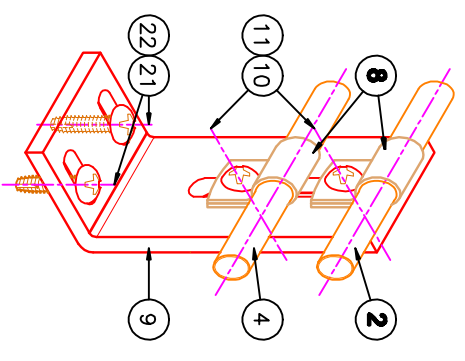
SCREEN CLOSURE
SCALE : HALF SIZE



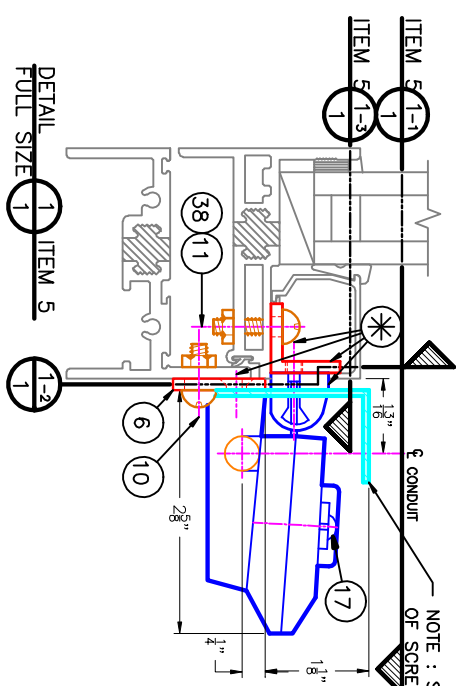
DETAIL 1-3 VENT PREPARATION
FULL SIZE 1 (NOT BY CLEARLINE, INC.)



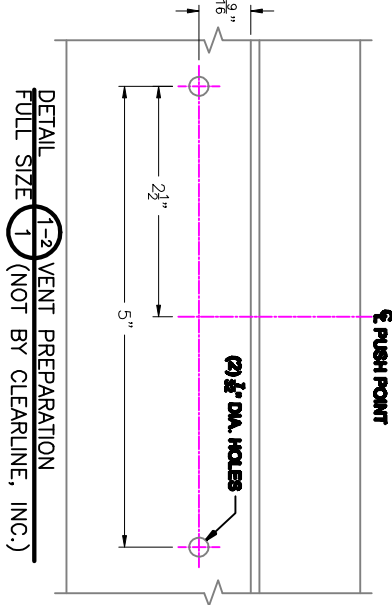
DETAIL 1-1 ITEM 5
FULL SIZE 1



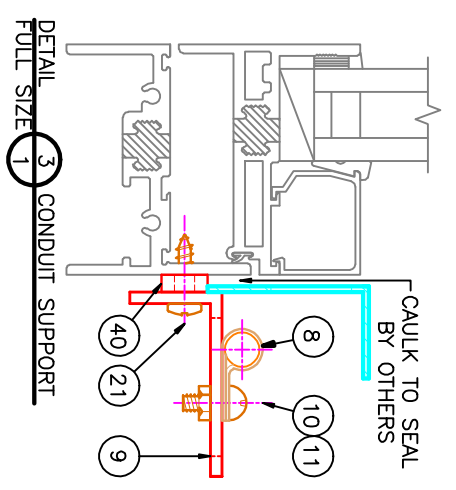
DETAIL 4 CONDUIT SUPPORT AT MOTOR
FULL SIZE 1



DETAIL 1-1 ITEM 5
FULL SIZE 1



DETAIL 1-2 VENT PREPARATION
FULL SIZE 1 (NOT BY CLEARLINE, INC.)



DETAIL 3 CONDUIT SUPPORT
FULL SIZE 1

- ELECTRICAL NOTES:**
- ITEM 3, MOTOR ASSEMBLY: MOTOR HAS BUILT-IN START/RUN CAPACITOR, OPERATOR PACKAGES.
 - LIMIT SWITCHES (1-OPEN, 1-CLOSED), TOTALLY ENCLOSED HOUSING AND EMERGENCY MANUAL OVERRIDE.
 - NOMINAL VOLTAGE 120V, 60HZ, SINGLE PHASE, 2.8 AMPS.
 - MOTORIZED CONTROL SYSTEM INCLUDES: THE MOTOR, 3-POSITION SWITCH, MULTI-MOTOR CONTROLLER AND CLEARLINE ATTACHMENT AT WINDOW.
 - IT DOES NOT INCLUDE: ANY INSTALLATION, FIELD WIRING, SWITCH BOXES, ELECTRICAL CONDUITS OR JUNCTION BOXES NECESSARY TO COMPLY WITH ELECTRICAL CODES.
 - NOTE: PROVISIONS FOR PROPER FIELD WIRING MUST BE COORDINATED WITH ELECTRICAL CONTRACTOR.
 - ITEM 7, COUPLING, MUST BE COMPLETELY ONTO SHAFT OF ITEM 1, OPERATOR, AND LOCKED IN PLACE WITH SET SCREW.
 - REFER TO WIRING DIAGRAM ED-301 : (3) MOTORS CONTROLLED FROM (1) MULTI-MOTOR CONTROLLER (ITEM 37) AND (1) KEY SWITCH (ITEM 39).
 - ANY KEY SWITCH CAN BE PLACED AT ANY LOCATION BUT SHOULD BE IN A SECURE LOCATION.
 - THESE MOTORIZED SYSTEMS AS SUPPLIED CANNOT BE CONTROLLED BY THERMOSTAT OR AUTOMATIC MODE.

- GENERAL NOTES:**
- ⊕ DENOTES ITEMS SUPPLIED IN HEADGEAR AND OPERATOR PACKAGES.
 - ➔ DENOTES END OF CABLE WITH VENTS CLOSED.
 - ➔ DENOTES DIRECTION CABLE TRAVELS TO OPEN VENTS.
 - THESE CONTROLS WILL OPEN VENTS, 13".
 - ~~PARTS HAVE STANDARD SILVER FINISH.~~
 - ALL ELEVATIONS ARE VIEWED FROM THE INSIDE.
 - VENTS MUST MOVE FREELY - FINGER TIP OPERATION, FOR EASE OF OPERATION, HINGES SHOULD BE SUPPLIED WITH "LOOSE RIVETS".
 - WARNING: KEEP HANDS/CHILDREN AWAY WHILE OPERATING WINDOWS.

ITEM PART NO.	DESCRIPTION	QTY.
41	139008 CABLE X 24 FT.	6
40	P. CLIP BRACKET SPACER	24
39	1754 KEY SWITCH	2
38	10-24 PAN HEAD MACHINE SCREW X 3/4	96
37	2099 MULTI-MOTOR CONTROLLER	2
36	1803 SET-UP SWITCH	1
35	1871S OPERATOR & MOTOR MFG. BRT.	6
34	1773S MOTOR BRACKET	6
33	1/4-20 NUT	26
32	1/4-20 HEX HEAD BOLT X 3/4	26
31	1/4-20 HEX HEAD BOLT X 5/8	14
30	1/4S LAG BOLT X 1-1/2	26
28	1/4 FLAT WASHER	62
27	1/4 LOOK WASHER	6
26	1738S LARGE P-CLIP BRACKET	6
25	1892 LIMIT SWITCH ADJUSTER	1
24	1953 SOCKET (TO INSTALL CABLE)	1
23	1550 CABLE CUTTER	1
22	#10 SCREW ANCHOR X 3/4	18
21	#10 SELF-TAPPING SCREW X 3/4	75
20	1635-24S CONDUIT	24
19	#10 SELF-TAPPING SCREW X 3/8	48
18	1390-80 SCREEN CLOSURE (MILL FINISH)	24
17	1515 ADJUSTING KEY AND SCREW	48
16	898111 C. SPANNER	1
15	1451 T. HANDLE	1
14	1453 GROOVER	1
13	1452 TUBING CUTTER	1
12	89499 FORNER	1
11	10-24 NUT	232
10	10-24 PAN. HEAD MACHINE SCREW X 1/2	135
9	528625 P. CLIP BRACKET	24
8	223S P. CLIP	48
7	1740 COUPLING PLATE	6
6	1427S EXTENSION PLATE	48
5	1820-82S HEADGEAR L.H.	48
4	1873S CONDUIT X 3 FT. (3/8" O.D.)	26
3	3014 MOTOR ASSEMBLY	2
2	1198S SPENT CABLE TUBE	12
1	1870S OPERATOR	6

PROJECT: SAMPLE 120V MOTORIZED SYSTEM

CUSTOMER:

ORDER NO.:

ARCHITECT:

WINDOW MFR.: WAUSAU - 2280 SERIES

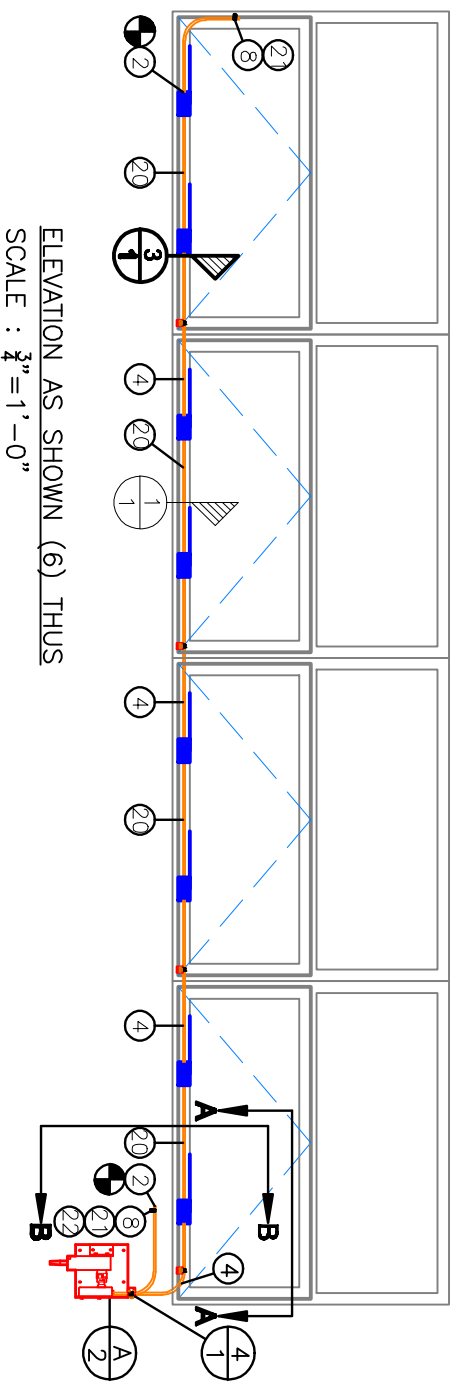
DATE: _____ **SCALE:** _____ **REVISIONS:**

CLEARLINE INCORPORATED
WINDOW CONTROL SYSTEMS
P.O. BOX 1389
NORTH WALES, PENNSYLVANIA 19444

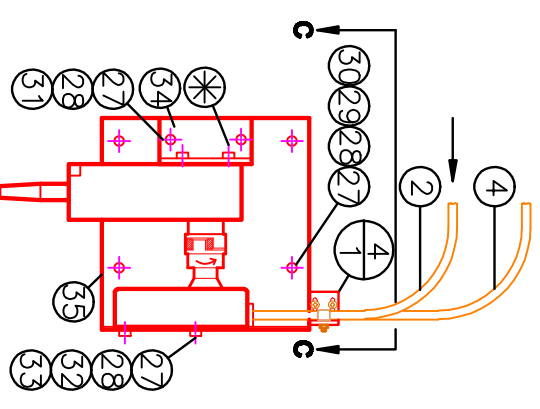
DATE: _____

AS NOTED

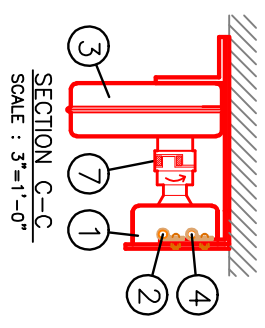
1 OF 2



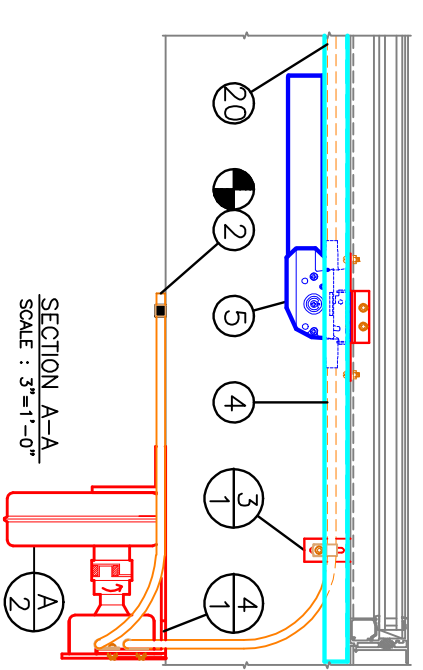
ELEVATION AS SHOWN (6) THUS
SCALE : $\frac{3}{4}$ "=1'-0"



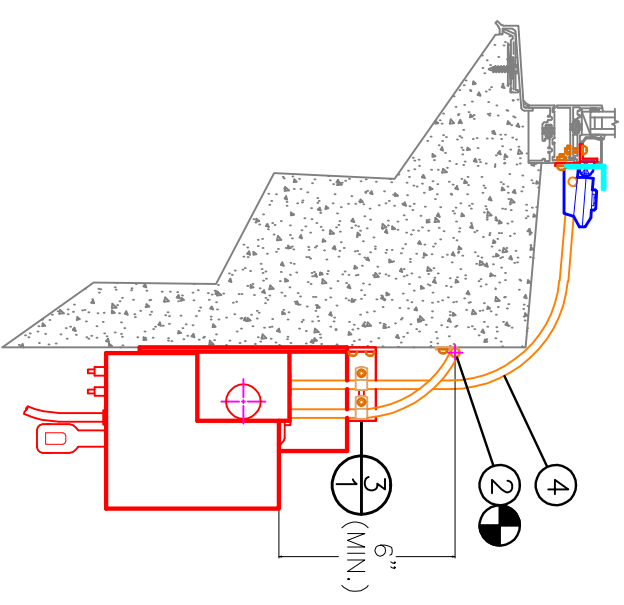
DETAIL A MOTOR ASSEMBLY
SCALE : 3"=1'-0"



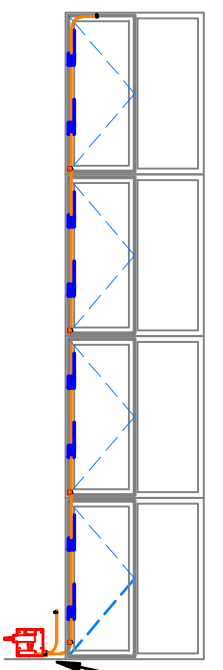
SECTION C-C
SCALE : 3"=1'-0"



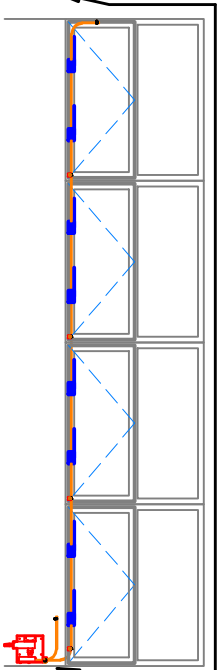
SECTION A-A
SCALE : 3"=1'-0"



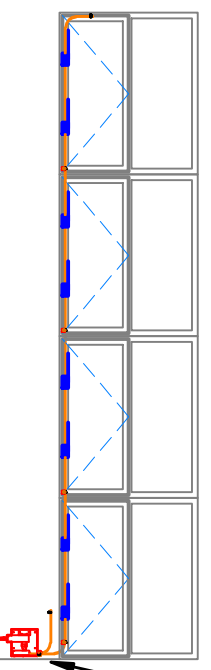
SECTION B-B
SCALE : 3"=1'-0"



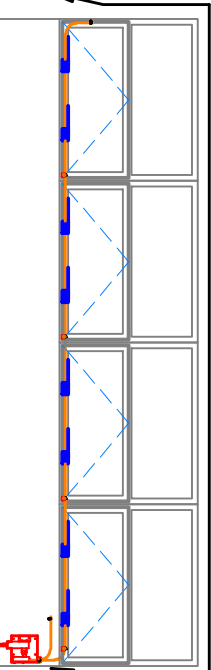
MOTOR KEY PLAN - NORTH ELEVATION AS SHOWN (1) THUS
SCALE : $\frac{3}{4}$ "=1'-0"



(3) MOTORS CONTROLLED FROM (1) MULTI-MOTOR CONTROLLER (ITEM 37)
AND (1) KEY SWITCH (ITEM 39)



MOTOR KEY PLAN - SOUTH ELEVATION AS SHOWN (1) THUS
SCALE : $\frac{3}{4}$ "=1'-0"



PROJECT:	
SAMPLE 120V MOTORIZED SYSTEM	
CUSTOMER	
ORDER NO.	
ARCHITECT	
WINDOW MFR.	WALSBALU - 2280 SERIES
QUANTITY	
DATE	
DESIGNER	
REVISIONS	
CLEARLINE INCORPORATED	
WINDOW CONTROL SYSTEMS	
P.O. BOX 1388	
NORTH WALES, PENNSYLVANIA 19444	
DATE	QUANTITY
AS NOTED	2 OF 2