

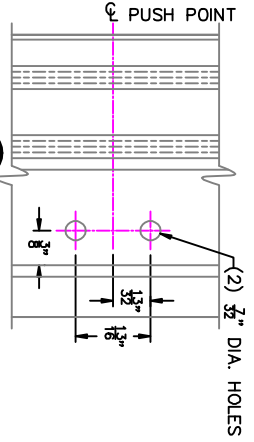
MANUAL - CONCEALED OPERATOR IN STUD WALL - ITEM 1
SCALE: HALF SIZE

OPERATOR AND CONDUITS ARE INSTALLED TO SILL LINE WITHIN THE WALL AT TIME OF CONSTRUCTION, CONDUITS TYPICALLY SPACED EVERY 2'-0" MIN. USE 4" BEND RADIUS. BLOCK AS REQUIRED TO SUPPORT OPERATOR BOX AND CONDUIT

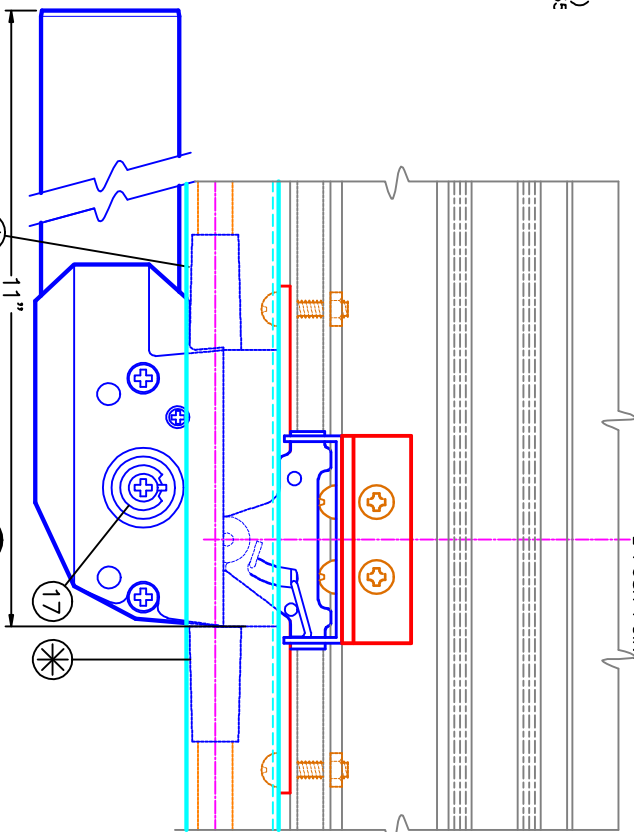
GENERAL NOTES:

1. DENOTES ITEMS SUPPLIED IN HEADGEAR AND OPERATOR PACKAGES.
2. DENOTES END OF CABLE WITH VENTS CLOSED.
3. DENOTES DIRECTION CABLE TRAVELS TO OPEN VENTS.
4. THESE CONTROLS WILL OPEN VENTS 14".
5. PARTS HAVE STANDARD SILVER FINISH.
6. ALL ELEVATIONS ARE VIEWED FROM THE INSIDE.
7. VENTS MUST MOVE FREELY - FINGERTIP OPERATION. FOR EASE OF OPERATION, HINGES SHOULD BE SUPPLIED WITH "LOOSE RIVETS".
8. WARNING: KEEP HANDS/CHILDREN AWAY WHILE OPERATING WINDOWS.

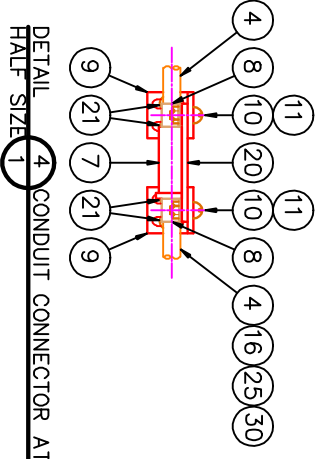
NOTE: MOUNT CONNECTOR (ITEM 7) A MINIMUM OF 1'-6" FROM ANY BEND



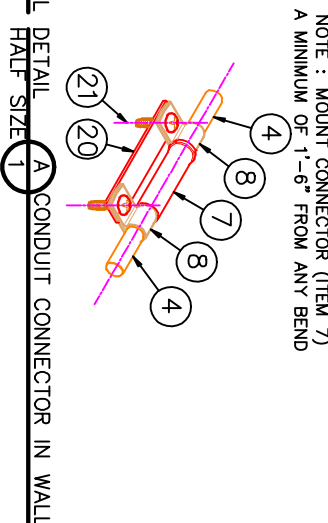
DETAIL VENT PREPARATION
FULL SIZE 1 (NOT BY CLEARLINE, INC.)



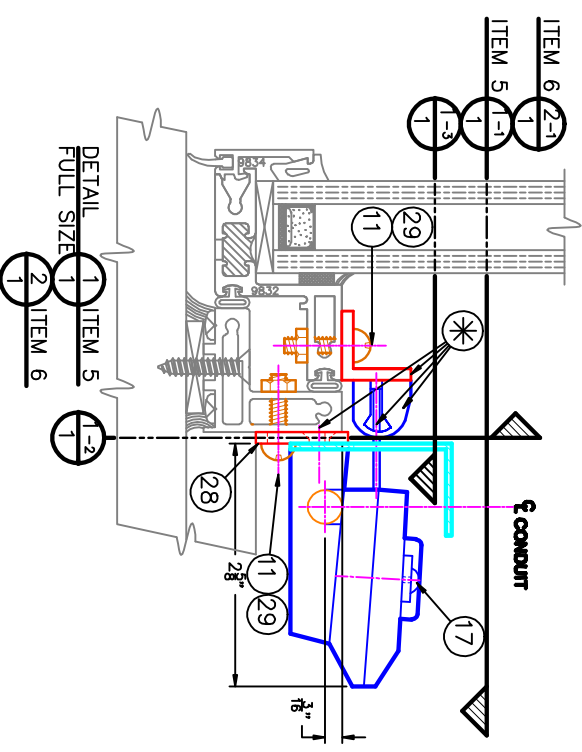
DETAIL VENT PREPARATION
FULL SIZE 1 (NOT BY CLEARLINE, INC.)



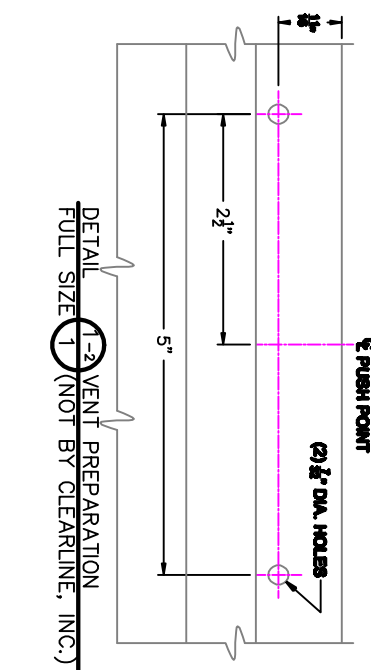
DETAIL CONDUIT CONNECTOR AT SILL
HALF SIZE 1



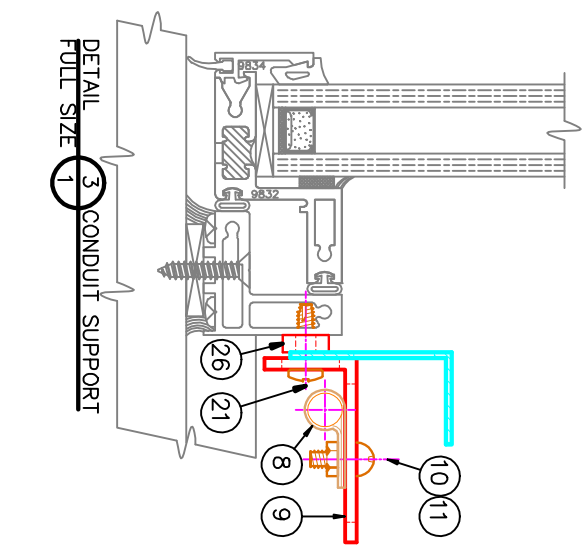
DETAIL CONDUIT CONNECTOR IN WALL
HALF SIZE 1



DETAIL VENT PREPARATION
FULL SIZE 1 (NOT BY CLEARLINE, INC.)



DETAIL VENT PREPARATION
FULL SIZE 1 (NOT BY CLEARLINE, INC.)

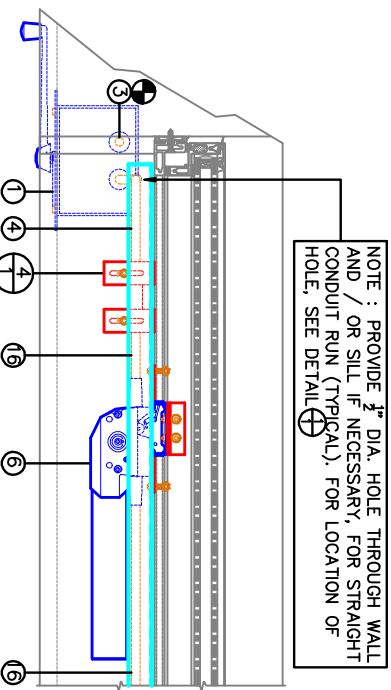
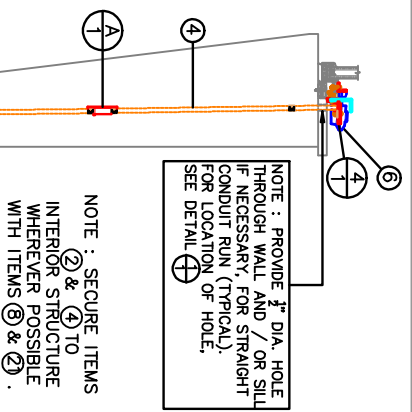


DETAIL CONDUIT SUPPORT
FULL SIZE 1

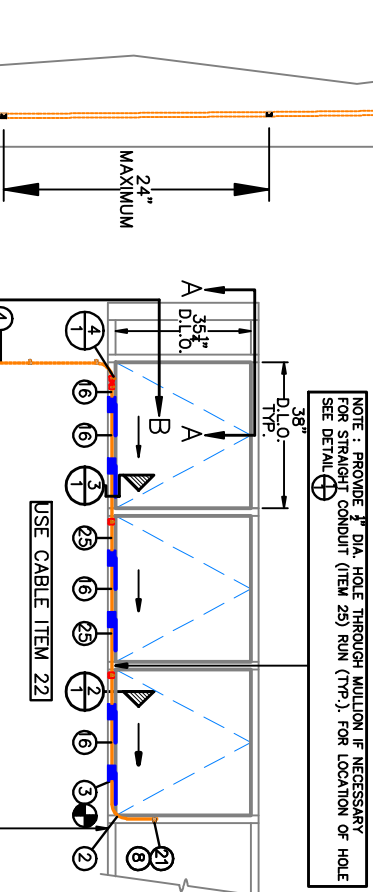
ITEM PART NO.	DESCRIPTION	QTY.
30	2083S CONDUIT X 4 FT.	5
29	10-24 PAN HEAD MACHINE SCREW X 3/4	72
28	1472S EXTENSION PLATE	17
27	1360-4816S SCREEN CLOSURE	5
26	1575 P-CLIP BRACKET SPACER	19
25	1873S CONDUIT X 3 FT.	4
24	136008 CABLE X 30 FT.	2
23	1550 CABLE CUTTER	1
22	136008 CABLE X 27 FT.	2
21	#10 SELF-TAPPING SCREW X 3/4	80
20	1292S CONNECTOR PLATE	8
19	#10 SELF-TAPPING SCREW X 3/8	24
18	1360-48S SCREEN CLOSURE AND SCREW	7
17	1515 ADJUSTING KEY	17
16	1635-16S CONDUIT	7
15	1451 T-HANDLE	1
14	1453 GROOVER	1
13	1452 TUBING CUTTER	1
12	89469 FORMER	1
11	10-24 NUT	90
10	10-24 PAN HEAD MACHINE SCREW X 1/2	22
9	526923 P-CLIP BRACKET	59
8	223S CONNECTOR	8
7	1330S HEADGEAR R.H.	14
6	1921-81S HEADGEAR L.H.	14
5	1920-81S CONDUIT X 7 FT.	3
4	1877S STOP SPRING (SEE DETAIL X)	10
3	138087 SPENT CABLE TUBE	8
2	11965 OPERATOR	8
1	1860A OPERATOR	4

SAMPLE CONCEALED MANUAL

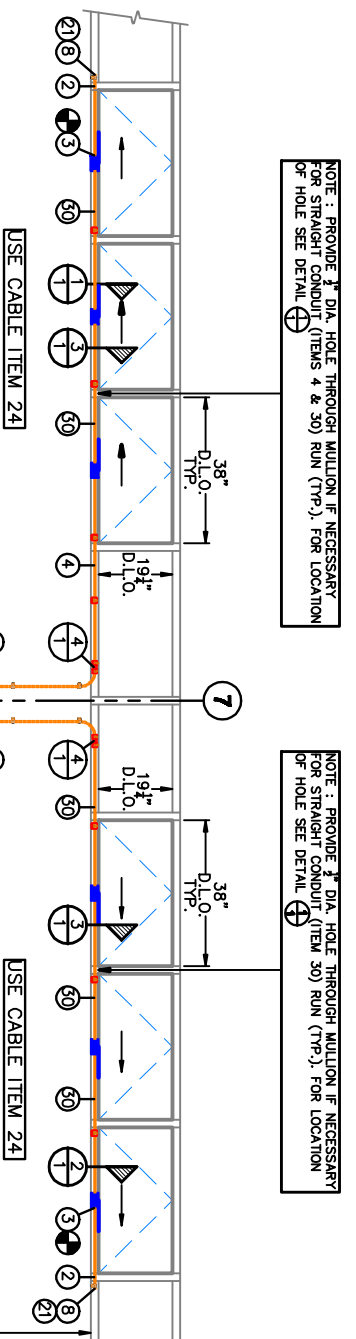
CUSTOMER	
ORDER NO.	
ARCHITECT	
WINDOW MFR.	EPROD 2700 SERIES
DATE	
SCALE	
CLEARLINE INCORPORATED	
WINDOW CONTROL SYSTEMS	
P.O. BOX 1388	
NORTH WALES, PENNSYLVANIA 18644	
SCALE	AS NOTED
DATE	1 OF 2



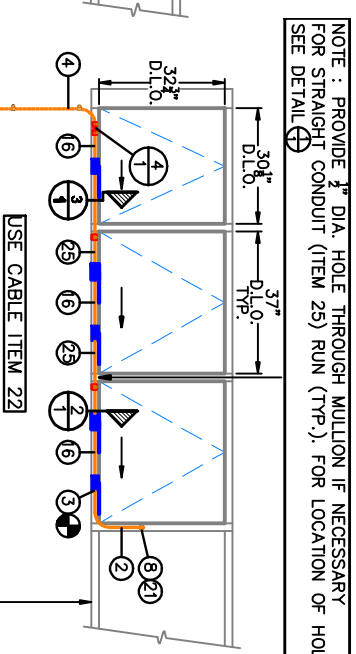
SECTION A-A
SCALE : 1/2"=1'-0"



TYPE W 14 (1 THUS)
SCALE : 1/2"=1'-0"



TYPE W 16 (1 THUS)
SCALE : 1/2"=1'-0"



TYPE W 18 (1 THUS)
SCALE : 1/2"=1'-0"

SECTION B-B
SCALE : 1/2"=1'-0"

PROJECT:

CUSTOMER	
ORDER NO.	
ARCHITECT	
WINDOW MFR.	EFGO 2700 SERIES
DATE	
DATE	
DATE	

CLEARLINE INCORPORATED
WINDOW CONTROL SYSTEMS
P.O. BOX 1388
NORTH WALES, PENNSYLVANIA 19444

DATE: 05/15/2018
AS NOTED 2 OF 2