

CLEARLINE^{INC.}

WINDOW CONTROL SYSTEMS

24 VDC MOTORIZED ACTUATOR SYSTEMS

STATE-OF-THE-ART DESIGN... BUILT TO LAST

The chain, made from double sprocket stainless steel, is adjustable. The lines of the case give the actuator a pleasant appearance and the different mounting brackets allow for the installation in a variety of situations.

The electrical parts are constructed with double insulation and contained in a plastic body to ensure the highest level of protection from the elements.

The case is made of cast alloy, coated in epoxy powders, available in four colors; white, black, bronze or silver.

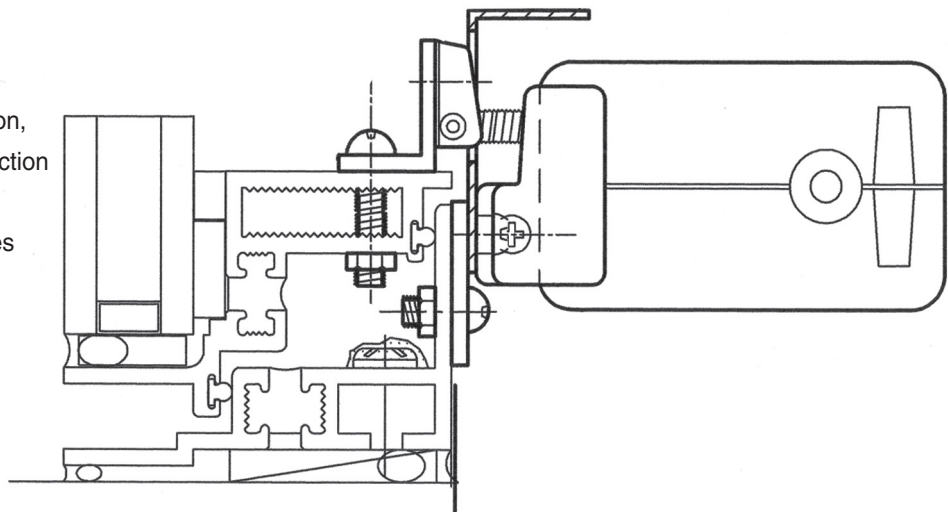
(Special order colors available -
Industry Standard/Market Price)



POWER RANGE
11 1/4" x 4" x 2"

ELECTRICAL NOTES

Our low-voltage motorized system includes: the actuator, 3-position switch, power supply, and window attachments. It does not include installation, field wiring, switch boxes, electrical conduit or junction boxes necessary to comply with electrical codes. Actuator Group Controllers and Screen Enclosures are optional.



THE CLEAR CHOICE

FOR ENERGY CONSERVING WINDOW MANAGEMENT
GREEN SINCE 1969

WWW.CLEARLINEINC.COM • 215-699-9292 • FAX 215-699-7112
P.O. BOX 1368 • 810-D DICKERSON ROAD • NORTH WALES, PA 19454-0368

